

CAMP CLAPHANS

A CAMP FOR KIDS WITH SPECIAL NEEDS



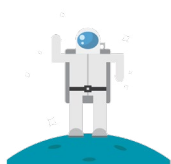
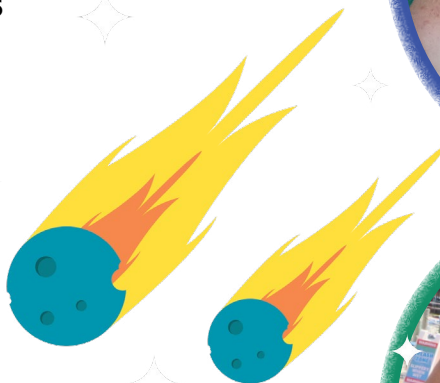
AT THE
J.D.
MCCARTY
CENTER

NORMAN,
OKLA., USA

35° 13' 48.4392" N
97° 24' 32.2488" W

TABLE OF CONTENTS

- 3 Letter from director
- 4 Camp costs & sessions
- 5 Camp enrollment process
- 6 Sample schedule
- 7 Health & safety
- 8 Meals, mail & cabin info
- 9 Financial assistance
- 11-17 Registration forms
- 18 Scholarship form
- 19 Benefits of summer camp



OUR MISSION

To enrich the lives of children with special needs by offering a camping experience that will build confidence and a sense of freedom through adventure and exploration of the outdoors.



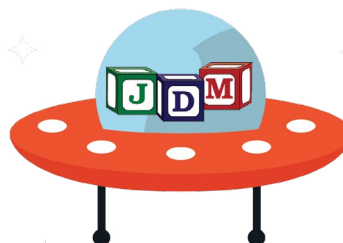
OUR VISION

To become the preferred camp for children with special needs where all campers, staff and volunteers are valued, hearts are touched and lifelong friendships are created.



We want to thank volunteer Adam Cobble, pictured left, for contributing photos and graphics to this catalog.

Adam is a graphic artist and photographer. He has volunteered at the camp since 2013.



This publication was authorized by Vicki Kuestersteffen, director and CEO of the J.D. McCarty Center. One hundred copies have been printed at a cost of \$600 and distributed. Copies of this report have been submitted to the Publications Clearinghouse of the Oklahoma Department of Libraries.

WELCOME TO CAMP!

Dear parents and guardians

My name is Bobbie Hunter and this is my fourth summer as director of Camp ClapHans at the J.D. McCarty Center. I am so excited to be a part of the eighth year of Camp ClapHans!

The summer of 2019 was very successful for Camp ClapHans and I can't wait for a whole new adventure in 2020!

Our camp serves children with special needs, ages 8 to 18, who are developmentally, socially and/or physically delayed. Camp ClapHans offers structured and well-thought out programming in order to make an everlasting impression on campers' social, recreational and self-confidence development. We do our best to place campers into sessions with similarly developing peers to encourage social skills, cooperation and self-esteem. If there is a specific week that you would like your child to attend or another camper that your child would like to have in his/her camp week, please specify this on the camp application.

Camp ClapHans has a 1-to-1 staff to camper ratio, registered dietitians on site to address dietary needs for campers and a physician and nurses available to assist with medical needs. Camp staff members also work with McCarty Center therapists and psychological clinicians to ensure campers' social and emotional needs are being met. Our staff members are typically university students working toward a degree in allied health care fields, education, recreation, nutrition and other related fields. Prior to camp, our staff members attend intensive on-site training. They are trained in first aid/CPR, ADL assisting

techniques, safety guidelines and addressing behaviors.

I am excited to announce that this year's camp theme will be "Out of this World!" I am very excited about the theme and all the activities that will go along with it! I am also happy to announce that some of our most popular evening activities will return, such as the talent show, dance party and stargazing with an astronomy club!

Like previous years, we are offering parents the opportunity to experience a very special part of camp. Wednesday afternoon, prior to the pick-up time, we will wrap up camp with an awards ceremony to acknowledge each of our campers with a unique award, specific to his or her talents and personalities. We also will show a video showcasing all of the fun activities at Camp ClapHans!

This summer we are asking for applications to be turned in by **March 6, 2020**, which will help us place your child into a camp session faster. The full balance for the camp is \$325 and will be due after your child has been placed into a camp session. (That amount could change depending on whether your family receives a scholarship to assist with camp costs).

Secondly, we will not secure your child's place in a session until we have received the full balance for camp and all required vaccination records. **Vaccinations are a requirement for kids to attend Camp ClapHans.**

Please take a moment to read this catalog where you'll find information about camp sessions, activities for the summer and other details. You also will find our camp registration forms and a scholarship application at the end of this catalog. If you're interested in a scholarship for your child, please fill out the application and send it in before March 20.

If you have additional questions about camp, please contact me at 405-207-2865 or by email at bhunter@jdmc.org.

Sincerely,
Bobbie Hunter,
Camp Director



CAMP COSTS & SESSIONS

The cost for your child to attend a session at Camp ClapHans is \$325. Scholarships are available to help pay a portion of the camp fee for families who qualify. We ask that families contribute a minimum of \$25 to the cost of camp. More information about scholarships can be found on **Page 18**.

Our summer program consists of four-day, three-night camp sessions for children with special needs. Each session begins Sunday afternoon and ends Wednesday afternoon. Campers stay in cabins located on the J.D. McCarty Center property.

Campers sleep in a wheelchair-accessible, climate-controlled cabin, shared by other campers and counselors. Each camper is assigned to a counselor for the week. The camper/counselor ratio is always 1:1. Camper's medical needs are overseen on-site by nurses. A physician is available should that service be needed.

Camp sessions are limited to 12 campers: Six boys and six girls divided into two cabins.

REGISTRATION

To make sure we will be able to meet each child's needs at camp, we will need to know some information in advance. Please fill out the registration application located in the back of this catalog.

Please submit an application as soon as possible. There are 60 spots available for camp each summer, and the camp fills up fast! We take applications on a first-come, first-served basis.

In order to process a registration application, we will need the application completed in full and the completed scholarship application, if you are applying. Please do not send payment with the application.

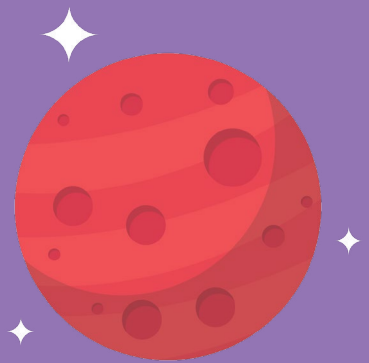


**Registration starts
Jan. 27, 2020, and
applications are
due March 6, 2020.**

CAMP PROGRAMS

While at camp, kids can try horseback riding, archery, arts and crafts, swimming, games, fishing and canoeing! The fun doesn't stop at dinnertime. During the evening, we will have talent shows, dance parties, stargazing and more.

At the end of the week, we take our campers on a field trip to a local water park. In case of inclement weather, we will have an alternate field trip planned.



CAMP SCHEDULE

We're soaring to new heights this summer with an "Out of this World" camp theme! Camp sessions start on Sundays and end on Wednesdays. Here's our schedule for 2020.



**Week 1 — June 14-17
Week 2 — June 21-24
Week 3 — June 28- July 1
Week 4 — July 12-15
Week 5 — July 19-22**



ENROLLMENT PROCESS

If your child is able to be placed into a camp session, you will receive an enrollment packet in the mail. The packet must be completed and returned as soon as possible to ensure placement into a camp session. Placement is based on a first-come, first-served basis and meeting the established selection criteria.

■ A completed registration application must be sent to the Camp ClapHans office. Please do not send payment at this time.

■ **A selection committee will review each application and make a determination if the applicant and Camp ClapHans are appropriate for one another.**

■ The camp director will notify the camper's family of the selection committee's decision.

■ An enrollment packet will be sent to the camper's family. Included in this packet will be: release forms; scholarship award information; requests for the camper's physical exam that has been completed in the last year and signed by a licensed physician; the camper's vaccination/immunization records that includes the date of his or her last Tetanus shot; and a copy of the camper's insurance card. Your child's spot in a camp session will not be secured until this information is received.

Please note: Vaccinations are required for campers.

■ The completed enrollment packet, along with all supporting documents and payment in full, must be returned to camp staff as soon as possible.

■ Once the completed enrollment packet is received, a confirmation letter will be sent to the camper's family with detailed information about the assigned camp session dates and times. A packing list and any other pertinent information will also be included.

■ Deadlines: Camp registration begins Jan. 27, 2020. The application deadline is March 6, 2020. If an application is received after March 6, it will not be processed unless there is availability.



OUR SELECTION CRITERIA

Children must have a diagnosis befitting our camp. Campers will be placed into a session by taking into consideration social skills, activity level, sensory needs and developmental age. By doing this, we hope to promote friendship, cooperation and social skills building among campers.

■ Children must be between the chronological ages of 8 to 18.

■ Children must be socially appropriate, not exhibiting maladaptive behaviors, which warrant removal from a group activity or setting.

■ Camp ClapHans is only able to serve a limited number of campers each summer; thus, each application goes through a thorough selection process. All applications undergo medical and behavioral review prior to being approved for camp. Selection of campers is based on a number of factors, including the child's medical history, behavioral history and the child's ability to participate and gain from the camp program.

■ Final approval is decided by a committee made up of experienced staff members of various applicable backgrounds. This committee will make determinations based on the above criteria and other information as deemed appropriate.

■ The guardians of approved campers will be scheduled for a phone interview to discuss their child and the camp program in more detail. If an application is not selected, we will notify the family as soon as possible.

■ At this time, Camp ClapHans cannot accommodate campers with chronic or severe aggressive, disruptive or destructive behavior. To gain the most from our camp program, a camper must be able to follow instructions and adhere to safety rules.



Follow us on Instagram:
[@campclaphans](https://www.instagram.com/campclaphans)

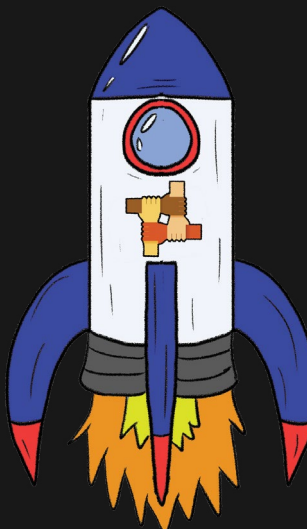


CHECKING INTO CAMP

Here's the process for checking your camper into and out of camp

Sunday: Parents or guardians will bring their child to camp at the drop-off time provided in the confirmation letter. The camper's family and assigned counselor will accompany the camper through the check-in process, which includes meeting with the camp nurse, dietary staff and psychological clinicians.

After the check-in process, the family is able to leave the camper with the assigned counselor to complete the rest of the evening's activities.



Wednesday: We will host an awards program at 4 p.m. on Wednesday. All campers will receive an award for something they excelled at during camp. Campers will have the opportunity to show their parents around the campground following the awards program.

Everyone should be packed up and headed home by 5 p.m. If you are unable to attend the awards program, please plan to arrive by 4 p.m. on Wednesday to pick up your camper.

SAMPLE SCHEDULE

At Camp ClapHans we follow a routine schedule for activities and meals. Here is what a typical day at camp may look like:

- ♦ 8 a.m. — Breakfast
- ♦ 9 a.m. — Horseback riding
- ♦ 10 a.m. — Archery
- ♦ 11 a.m. — Canoeing
- ♦ 12 p.m. — Lunch
- ♦ 1 p.m. — Downtime to relax
- ♦ 2 p.m. — Water games
- ♦ 3 p.m. — Swimming
- ♦ 4 p.m. — Swimming
- ♦ 5 p.m. — Arts and crafts
- ♦ 6 p.m. — Dinner
- ♦ 7 p.m. — Talent show
- ♦ 8 p.m. — Showers
- ♦ 9 p.m. — Stargazing
- ♦ 10 p.m. — Lights out



COUNSELORS & STAFF

Camp staff are selected for their career goals, experience, maturity and interest in serving kids with special needs.

Prospective staff members are recruited through colleges, universities and schools. Each prospective staff member completes an application with references and agrees to a criminal background check. Staff with direct responsibilities to campers must be 18 or older.

Prior to camp, staff members will attend on-site training sessions. The training includes first aid/ CPR, ADL care, caring for children with special needs, safety and emergency standards, as well as policies and procedures for Camp ClapHans.

Staff members also receive additional training for specific programs, such as archery, canoeing and horseback riding.

Campers are closely supervised at all times with camper to staff ratios of 1-to-1. Camp ClapHans staff members are carefully matched to one camper per week and given pertinent registration information before the camper arrives. This helps the camp staff get to know your child better.



HEALTH & SAFETY

Your camper's safety is our top concern. Camp ClapHans adheres to the safety policies of the J.D. McCarty Center. Here are some of our safety procedures:

- Every night, the main gate into the J.D. McCarty Center is closed and staffed by a security guard.
- Every night, the entry gate to Camp ClapHans is closed.
- Camp ClapHans is staffed by a qualified camp director and nurse 24 hours a day. In addition, a local physician is on call should those services be needed.
- Campers receive a health screening at check-in, where the camp nurse evaluates for illness, injury or communicable diseases, verifies health information and collects all medications.
- Campers will be assisted in taking all medications, including vitamins or topical medications.
- All medications at camp remain locked in the nurse's station and are administered by the camp nurse.

***A note about medication:** Medications that are brought to camp must be in the original container (prescription and nonprescription), not expired, have the camper's name listed on it and the label must include the dosage amount and frequency of administration.

MORE CAMP INFO

LOST & FOUND

Lost and found items will be collected at the end of each week once campers have left the property. Parents are encouraged to double-check the cabin and activity areas for camper belongings prior to departure on Wednesday.

Parents will be notified about found items that have camper identification. It is the responsibility of the camper's family to retrieve any missing items. Camp ClapHans will not mail lost and found items. Lost and found items will be kept at the J.D. McCarty Center until the first Friday in September. After this date, any unclaimed lost and found items will be donated to the J.D. McCarty Center.

MEALS

Well-balanced meals are prepared daily by professional cooks and overseen by dietitians from the J.D. McCarty Center. The kitchen staff is well versed in the needs of modified diets, including consistency changes, gluten-free diets and food allergies.

The camp offers three meals a day and frequent snacks from Monday through Wednesday. On Sunday, after registration is complete, dinner is served at 6 p.m.

For kids requiring assistance with feeding, camp staff will be trained to aid these campers. Foods for kids requiring special diets can be brought to camp, however, we do not allow food in the cabins. Therefore, all outside food will be stored in the kitchen.

LAUNDRY

Camp ClapHans does not provide laundry service for individual campers. However, we do clean soiled items when necessary. We do ask campers to bring a laundry bag or a plastic bag with them to camp to use for dirty clothes.



CABINS

Every cabin has central heat and air, bunk beds, storage areas for campers' belongings and a nurse's station.

Cabins also have accessible bathrooms with showers and toilets. Each cabin sleeps six campers and eight staff members. Campers need to bring towels and toiletries with them to camp, as well as their own bedding (sheets, pillows, etc.). A packing list will be provided in the confirmation letter to campers.

MAIL

Some campers love to receive mail. If you would like your child to receive mail at camp, you may leave pre-written mail with the camp staff during check-in.

If you choose to send letters using traditional mail, please ensure that the mail is sent early in order for the camper to receive it during his/her stay at camp. We do not forward mail after the camper has left. The camp mailing address is:

J.D. McCarty Center
Attn: Camp ClapHans
2002 E. Robinson St.
Norman, OK 73071

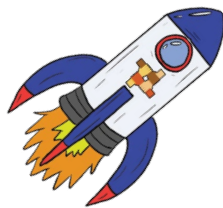
REFUND POLICY

Camp ClapHans, as a general rule, does not offer refunds if the camper's attendance is canceled by the family. However, we understand there may be unavoidable circumstances that warrant cancellation.

If the cancellation is for a medical reason, a request for a refund must be submitted in writing, along with any supporting documentation. You may request a refund for a non-medical reason by sending a request in writing detailing the circumstances of cancellation prior to the camper's scheduled session.

Requests for refunds should be sent to:

J.D. McCarty Center
Attn: Camp ClapHans
2002 E. Robinson St.
Norman, OK 73071



*If a refund becomes necessary, we will require specific personal identification — including the Social Security number of the person requesting a refund — to process the payment.

Due to circumstances beyond our control, such as inclement weather, staffing or safety considerations, certain activities within a session may be canceled or altered from the description in this catalog. In such circumstances, we will have alternative activities, and no refunds will be given.

CAMP NAMESAKE

Camp ClapHans is named in honor of Sammy Jack Claphan, a citizen of the Cherokee Nation and an Oklahoma native.

Sammy Jack played football for the University of Oklahoma and graduated with a degree in special education. Afterward, he played in the NFL for the Cleveland Browns and the San Diego Chargers.

After retiring from football, Sammy Jack returned to Oklahoma and became a coach and a special education teacher. In 1994, he was inducted into the American Indian Athletic Hall of Fame.

Sammy Jack died in 2001. He was 45.



FINANCIAL ASSISTANCE

Camp ClapHans offers a scholarship program for families. Scholarship awards are based on a sliding scale, and are subject to availability of funds. Scholarships are a way to supplement the amount that a family can afford to pay.

All applications are kept confidential. If you need financial assistance, please complete the scholarship application form, along with the camp registration form.

Applications will be considered by the scholarship committee, and parents/ legal guardians will be notified of the committee's decision.

Only applications with complete information, including the amount of financial aid requested, will be considered.

These scholarships are made possible by camp fundraisers, the J.D. McCarty Center Foundation and generous support from donors.

CONTACT INFO

For more information about camp or registration, please contact Camp Director Bobbie Hunter at 405-307-2865 or email bhunter@jdmc.org.

For information about volunteering at camp, contact Volunteer Coordinator Jennifer Giamelle at 405-573-5342 or email jgiamelle@jdmc.org.

IMPORTANT DATES

Please note these deadlines for summer 2020:

Jan. 27 — Camp registration opens.

March 6 — Camp applications and scholarship applications due.

April 10 — All enrollment forms and payment must be submitted. Here are the items needed in the packet:

Vaccines/immunizations record; documentation of physical exam; insurance card; medication sheet; photo/video release form; authorized release of camper; off-site activities authorization; and camper's shirt size.





REGISTRATION FORMS

SUMMER 2020



Registration application

Please return completed applications to us by:

- Email: bhunter@jdmc.org
- Fax: 405-307-2801

● Mail:

J.D McCarty Center
Attn: Camp ClapHans
2002 E. Robinson St.
Norman, OK 73071

This application is meant to assist Camp ClapHans in creating the best possible experience for campers with special needs. Please complete the sections as they apply to your child. Thank you!

Camper name: _____

Address: _____

City: _____ State: _____ ZIP _____ Phone: _____

Age: _____ Date of birth: _____ Male: _____ Female: _____

Parent or guardian: _____

Email: _____ Camper's shirt size: _____

Health insurance information:

Carrier: _____ Group number _____ ID number _____

Name of primary insured: _____

Relationship to camper: _____

Primary care doctor: _____

Phone: _____ Date of last examination: _____

Emergency contacts:

*** Please list someone other than the parent/guardian listed above, and someone who will know how to contact you if we are unable to reach you.**

Name: _____ Phone: _____

Relationship to camper: _____

Name: _____ Phone: _____

Relationship to camper: _____

Camp sessions: Please mark all the sessions your camper is available to attend, and we will do our best to place them in the most appropriate group of campers:

☐ June 14-17 ☐ June 21-24 ☐ June 28- July 1 ☐ July 12-15 ☐ July 19-22 ☐ All camp sessions

For office use only:

RCV _____ SCH _____ NRS _____ PHN _____ BAL _____ PSY _____

Camper's diagnosis: *(Check all that may apply)*

- | | | | |
|---|--|---|---|
| <input type="checkbox"/> Asthma | <input type="checkbox"/> Down syndrome | <input type="checkbox"/> Autism | <input type="checkbox"/> Cerebral Palsy |
| <input type="checkbox"/> Epilepsy | <input type="checkbox"/> ADD/ADHD | <input type="checkbox"/> Diabetes: Type I or II | <input type="checkbox"/> Heart condition |
| <input type="checkbox"/> Asperger's | <input type="checkbox"/> Blind | <input type="checkbox"/> Dyslexia | <input type="checkbox"/> Traumatic brain injury |
| <input type="checkbox"/> Seizure disorder | <input type="checkbox"/> Hypertension | <input type="checkbox"/> Developmental delay | <input type="checkbox"/> Visual impairment |
| <input type="checkbox"/> Deaf | <input type="checkbox"/> Communication delay | <input type="checkbox"/> Obesity | <input type="checkbox"/> Learning disability |
| <input type="checkbox"/> Spina Bifida | <input type="checkbox"/> Intellectual disability | <input type="checkbox"/> Hearing impaired | <input type="checkbox"/> Muscular dystrophy |
| <input type="checkbox"/> Multiple sclerosis | <input type="checkbox"/> Other | | |
| <input type="checkbox"/> Spinal cord injury: Quadriplegic or paraplegic | | | |
| <input type="checkbox"/> Breathing difficulties: | | | |

*Trach: Specify type _____

*Any important surgeries, hospitalizations or medical complications that may affect the child's camp experience? _____

Medical information:

Vision

- | | | |
|--|--|--|
| <input type="checkbox"/> Sighted/ Normal | <input type="checkbox"/> Night blindness | <input type="checkbox"/> Legally blind |
| <input type="checkbox"/> Partially sighted | <input type="checkbox"/> Color blind | <input type="checkbox"/> Other _____ |

Hearing

- | | | |
|--|---|---------------------------------------|
| <input type="checkbox"/> Normal | <input type="checkbox"/> Partial hearing | <input type="checkbox"/> Legally deaf |
| <input type="checkbox"/> Normal with aid | <input type="checkbox"/> Partial hearing with aid | <input type="checkbox"/> Other _____ |

Communication

Is the camper able to understand and communicate his/her needs to others? (Ex. Food, drink, bathroom, help) ☐ Yes ☐ No

- | | | | |
|-------------------------------------|--|--|-----------------------------------|
| <input type="checkbox"/> Verbal | <input type="checkbox"/> Communication board | <input type="checkbox"/> PECS | <input type="checkbox"/> Gestures |
| <input type="checkbox"/> Non-verbal | <input type="checkbox"/> Electronic device | <input type="checkbox"/> Sign language | <input type="checkbox"/> Other |

If other, please explain: _____

Mobility

- | | | |
|---|--|---|
| <input type="checkbox"/> Ambulatory (no assist) | <input type="checkbox"/> Wheelchair- power | <input type="checkbox"/> Wheelchair- manual |
| <input type="checkbox"/> Cane(s) | <input type="checkbox"/> Walker | |

Seizure activity

☐ None

☐ Petit Mal
(absence)

☐ Grand Mal
(generalized tonic/clonic)

☐ Complete Partial

Frequency: _____ Duration: _____

Date of last seizure? _____

How is the seizure treated?

☐ Regular/scheduled meds

☐ Emergency meds

☐ Both

Please describe the camper before, during and after the seizure: _____

Transfers

☐ Standby

- Two person

- ☐ Mechanical lift

☐ Other _____

☐ Independent

- Stand and pivot

☐ One person total lift

☐ None

Adaptive devices

☐ None

□ AFO's

- Leg braces

- Prosthesis

☐ Helmet

☐ Glasses

- ☐ Hearing aids

- Splint

☐ Other _____

*Parents/guardians will be asked to instruct camp staff on how to use special adaptive equipment when child arrives to camp.

Other medical items to be aware of:

- Shunt

- Rods

☐ Other _____

Swimming

Can the camper swim with supervision? ☐ Yes ☐ No

Please describe your child's swimming experience and routine, including any required equipment:

Behavior:

General disposition: (Check all that may apply)

- | | | |
|--|---|----------------------------------|
| <input type="checkbox"/> Generally easygoing | <input type="checkbox"/> Unsure of new situations | <input type="checkbox"/> Wanders |
| <input type="checkbox"/> Temper tantrums | <input type="checkbox"/> Shy/withdrawn | <input type="checkbox"/> Helpful |

Is this your child's first time staying away from home? _____

What does your child like? What is he/she afraid of? _____

In your opinion, what is your child's developmental age? _____

Please indicate how often your camper exhibits the following behaviors and the consequences:

Behavior	How many times does behavior occur? Daily or monthly?	What causes behavior?	How do you address this behavior?
Scratches, pinches or hits self or others			
Bangs head			
Grabs others			
Touches others inappropriately			
Throws things			
Gets into personal belongings			
Runs away			
Climbs on furniture			
Uses inappropriate language			
Spits on others			
Dumps food or liquids			
Strips clothing			
Other			

Personal care information:

Eating

☐ No Assist ☐ Partial assist ☐ Total assist

Please describe any assistance required for feeding: _____

List adaptive equipment needed for feeding: _____

Diet

☐ Normal ☐ Chopped food ☐ Blended/ puree ☐ Diabetic
☐ G-Tube only ☐ G-Tube and oral foods

Food allergies or special dietary needs: _____

Does the camper have any difficulty swallowing? ☐ Yes ☐ No

List any strongly liked or disliked foods: _____

Toileting

<u>Bladder control:</u>	<input type="checkbox"/> No assist	<input type="checkbox"/> Needs reminder	<input type="checkbox"/> Occasional accidents
	<input type="checkbox"/> Incontinent	<input type="checkbox"/> Total assist	
<u>Bowel control:</u>	<input type="checkbox"/> No assist	<input type="checkbox"/> Partial assist	<input type="checkbox"/> Total assist

Please explain home toileting routine: _____

Does your child wear:

☐ Underwear ☐ Pull-ups ☐ Diapers ☐ Pull-ups at night only
☐ Other _____

Bathroom aids:

☐ Urinal ☐ Toilet chair ☐ Catheter ☐ Other _____

Menstrual care

☐ Non-applicable ☐ No assist ☐ Needs reminder ☐ Partial assist ☐ Total assist

Please explain any assistance needed: _____

Washing/ showering

☐ No Assist ☐ Partial assist ☐ Total assist

Please describe bathing routine: _____

Dressing

☐ No assist ☐ Partial assist ☐ Total assist

Please describe dressing routine: _____

Sleeping

Sleep walks? ☐ Yes ☐ No

Needs to be awakened or turned during the night? ☐ Yes ☐ No

Other information : _____

Medication information:

Does the camper have any allergies? ☐ Medication ☐ Food ☐ Other

If yes, please list: _____

Does the camper take any medication? ☐ Yes ☐ No

If yes, please list: _____

The following non-prescription OTC medications may be used on an as-needed basis to manage illness and injury.

Please check all that apply. Camp ClapHans has permission to give camper the following:

- ☐ Laxatives for constipation (Ex-Lax) ☐ Aloe vera gel, topical ☐ Calamine lotion, topical
☐ Bismuth Subsalicylate for diarrhea (Pepto-Bismol) ☐ Lice shampoo or cream (Nix or Elimite)
☐ Antibiotic cream, topical ☐ Sore throat spray ☐ Generic cough drops
☐ Diphenhydramine antihistamine/allergy medicine (Benadryl) ☐ Antihistamine/allergy medicine
☐ Dextromethorphan cough syrup (Robitussin DM) ☐ Guaifenesin cough syrup (Robitussin)
☐ Acetaminophen (Tylenol) ☐ Pseudoephedrine decongestant (Sudafed)
☐ Phenylephrine decongestant (Sudafed PE) ☐ Ibuprofen (Advil, Motrin)

Consent:

This health history is correct as far as I know. My child has my permission to engage in all camp activities, including horseback riding, unless exceptions noted:

I give my permission for medications to be administered by the nurse and understand that WRITTEN INSTRUCTIONS ARE REQUIRED. This includes prescription and non-prescription drugs, as well as topical or external applications. Medications are to be labeled and given to the nurse at the start of camp; no medications can be left with your child for self-medication.

In the event of injury, I hereby give permission to the medical personnel selected by the camp staff to order X-rays, routine tests and treatment; to release any records necessary for insurance purposes; and to provide or arrange necessary related transportation for my child. In the event I cannot be reached in an emergency, I hereby give permission to the physician selected by the camp director to secure and administer treatment, including hospitalization for my child.

Signature of Parent/ Guardian _____

Date _____

Note: Parents/guardians, please send a current photo of your child with this application.



Camp Claphans



BENEFITS OF SUMMER CAMP

Here are some of the rewards that camp can offer kids:



Building friendships and social skills



Developing confidence and resiliency



Physical activity and time spent in nature

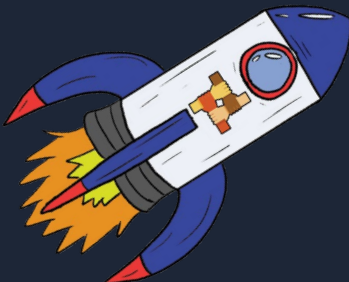


Developing independence



Learning the values of leadership

SOURCE: www.ourkids.net



CAMP CLAPHANS



NORMAN,
OKLA., USA

35° 13' 48.4392" N
97° 24' 32.2488" W